

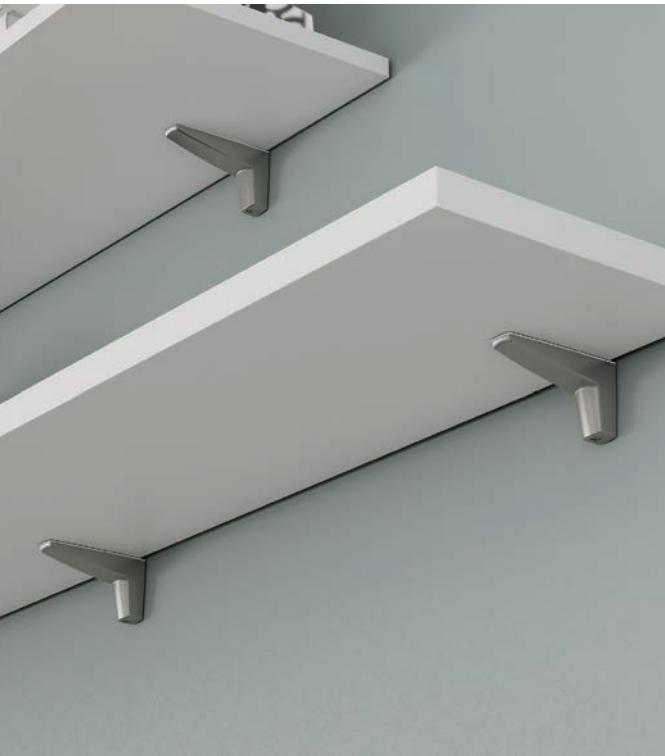
# WALL MOUNTED SHELF SUPPORTS



Our range of wall mounted shelf supports offers a choice of load capacities alongside both visible and concealed options. A great choice when style and finish is crucial.

# MOON WALL FIXING SHELF SUPPORTS

Moon is a decorative and structural shelf support for wall mounted shelves, with a fresh and contemporary design. Ideal for both glass and wood shelves from 4 to 25 mm thick.



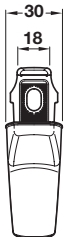
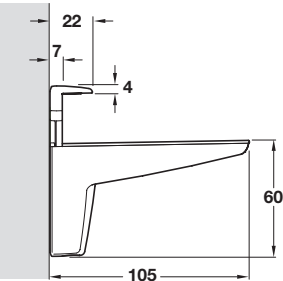
## Moon shelf support for glass and wooden shelves



For 4-25 mm shelf thickness



For 15-50 mm shelf thickness



- > Adjustable shelf support
- > For 4-25 or 15-50 mm thick glass or wooden shelves
- > Easy alignment of the brackets against the wall
- > For glass shelves use the adhesive rubber insert on the upper part
- > Load capacity: 50 kg for a shelf 320 mm deep
- > Supplied with counterplate, screws and fitting instructions
- > Wall fixing screws are not included - use fixings suitable for wall material
- > Zinc alloy / plastic
- > Order qty: 1 pc (1 pc includes 2 shelf supports)

For shelf thickness	4-25 mm	15-50 mm
Matt nickel	282.84.170	282.84.171
Matt black	282.84.370	282.84.371
Polished chrome	282.84.270	282.84.271



- > The load capacity of the shelf support is dependent on:
  - Shelf material
  - Shelf depth
  - Properties and condition of wall
- > More than 2 pcs may be required per shelf depending on shelf weight and dimensions

# KAIMAN WALL FIXING SHELF SUPPORTS

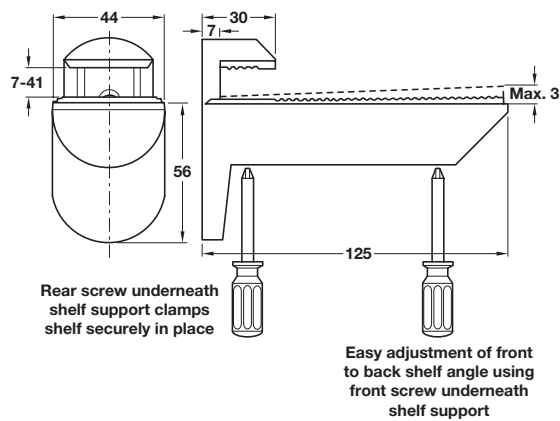
Special fixing method for fine adjustment of bracket height to ensure shelves are level.



Kaiman shelf support for glass and wooden shelves



- > Adjustable shelf support
- > For 7-41 mm shelf thickness
- > Special fixing method for fine adjustment of bracket height to ensure shelves are level
- > Shelf clamped between a layer of ridged plastic on both the lower and upper sides
- > Load capacity: 25 kg for a shelf 320 mm deep
- > These shelf supports can be spaced every 400-500 mm, depending on the use, load, material and thickness of the shelf
- > Screw fixings included for fixing to concrete or brick walls
- > Engineering plastic is a high quality plastic with good strength and weight qualities
- > Zinc alloy and engineering plastic
- > Order qty: 1 pair



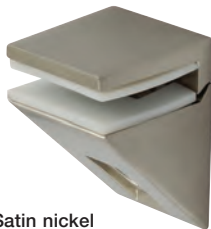
Finish	Cat. No.
Aluminium	284.04.922
Stainless steel	284.04.022
Matt black	284.04.322

# KALABRONE MINI WALL FIXING SHELF SUPPORTS

Easy adjustment of the brackets against the wall.

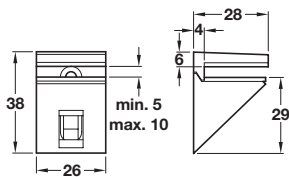


Polished chrome



Satin nickel

## Kalabrone Mini shelf support for glass shelves



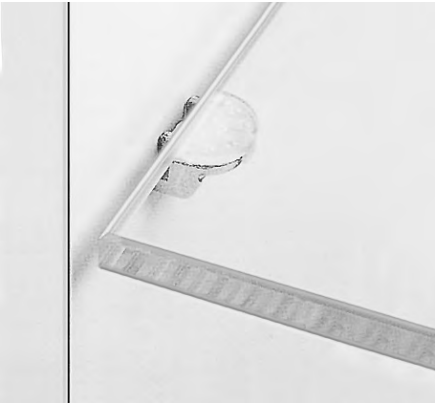
- > Adjustable shelf support
- > For 5-10 mm thick glass
- > Easy alignment of the brackets against the wall
- > Shelf clamped between a soft rubber on both the upper and lower side
- > Load capacity: 6 kg for a shelf 150 mm deep
- > Clamping screw, plastic cover and instructions are included
- > These shelf supports can be spaced every 400-500 mm, depending on the use, load, material and thickness of the shelf
- > Zinc alloy and soft clear rubber
- > Order qty: 1 pc



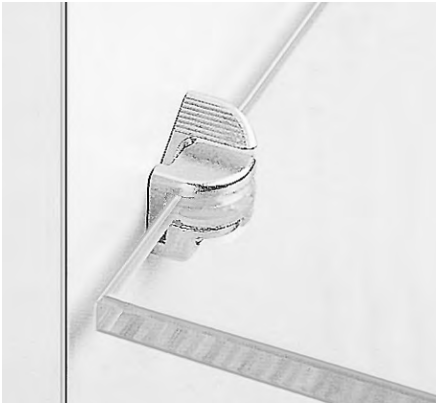
Finish	Cat. No.
Polished chrome	284.09.230
Satin nickel	284.09.030

# IXCONNECT SCREW FIXING SHELF SUPPORTS FOR GLASS

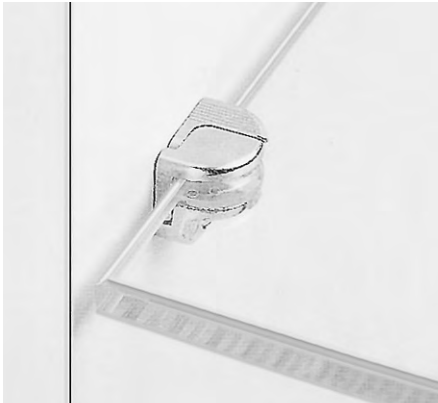
Two-part shelf support with tightening element that holds the shelf in position and prevents tipping.



After the shelf support has been tightened in the side panel the glass shelf is put into place



...then the tightening element is inserted.

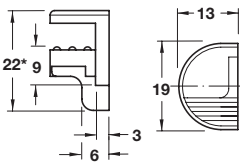


Pressing down on the tightening element fixes the glass shelf in position. The shelf support prevents it from tipping as well as being unintentionally lifted and removed.

## Glass shelf support, screw fixing



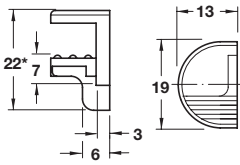
282.13.701



\*For 6 mm glass thickness



282.13.702



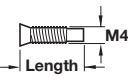
\*For 8 mm glass thickness

- > For Ø 3 mm hole, or Ø 5 mm with sleeve (order separately)
- > For 6/8/10 mm or 8/10/12 mm glass thickness
- > Zinc alloy with transparent plastic glass support
- > Order qty: Multiples of 10 pcs



For glass thickness	6/8/10 mm	8/10/12 mm
Nickel-plated	282.13.701	282.13.702

## M4 mounting screw

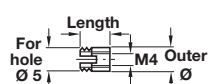


- > For use with sleeve Cat. No. 051.45.004
- > Nickel-plated steel
- > Order qty: Multiples of 100 pcs



Length	Cat. No.
15 mm	282.13.791

## Sleeve, M4 internal thread



- > For Ø 5 mm hole
- > Bright brass
- > Order qty: Multiples of 100 pcs



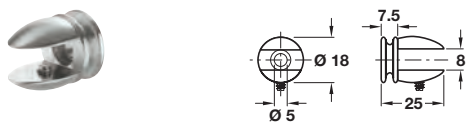
Length	Cat. No.
8 mm	051.45.004



## Glass shelf support, screw fixing



- > Grub screw holds shelf in place
- > For 5-7 mm glass thickness
- > Zinc alloy
- > Order qty: 1 pc

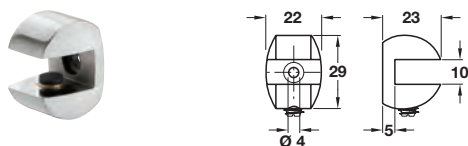


Finish	Cat. No.
Stainless steel	284.01.001
Polished chrome-plated	284.01.201

## Glass shelf support, screw fixing

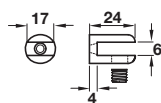


- > Grub screw holds shelf in place
- > For 8-10 mm glass thickness
- > Zinc alloy
- > Order qty: 1 pc



Finish	Cat. No.
Stainless steel	284.01.011

## Glass shelf support, screw fixing

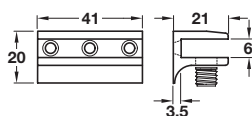


- > Grub screw holds shelf in place
- > For max. 6 mm glass thickness
- > Zinc alloy
- > Order qty: 1 pc



Finish	Cat. No.
Polished chrome	282.08.200

## Glass shelf support, screw fixing



- > Grub screw holds shelf in place
- > For max. 6 mm glass thickness
- > Zinc alloy
- > Order qty: 1 pc

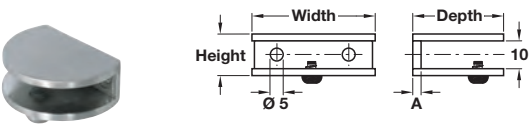


Finish	Cat. No.
Polished chrome	282.07.200

Shelf clamp support, screw fixing



- > For 6-8 mm or 6-10 mm shelf thickness
- > Zinc alloy
- > Order qty: 1 pc

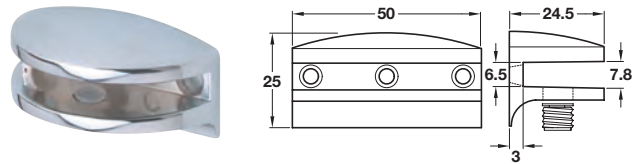


Size	Shelf thickness	A	Depth	Width	Height
Small	6-8 mm	4.0 mm	22 mm	29 mm	14.5 mm
Large	6-10 mm	4.5 mm	36 mm	49 mm	16 mm



Finish	Small	Large
Stainless steel	284.01.051	284.01.053
Polished chrome-plated	284.01.251	284.01.253

Glass shelf support, screw fixing



- > For max. 6 mm glass thickness
- > Zinc alloy
- > Order qty: 1 pc

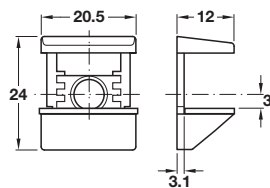


Finish	Cat. No.
Polished chrome	282.09.200



- > The load capacity of the shelf support is dependent on:
  - Shelf material
  - Shelf depth
  - Properties and condition of wall
- > More than 2 pcs may be required per shelf depending on shelf weight and dimensions

## Shelf clamp support, screw fixing



- > For screw fixing in Ø 3 or Ø 5 mm drilled holes
- > Lifting and clamping device prevents glass shelf from tipping, lifting or coming out
- > For 6, 8 and 10\* mm glass thicknesses (\*For 10 mm glass the top rubber part needs to be removed)
- > Zinc alloy with plastic insert for glass
- > Order qty: 1 pc\*



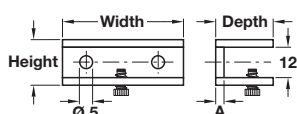
Finish	Cat. No.
Nickel-plated	282.13.600

## Shelf clamp support, screw fixing



- > For 5-8 mm or 8-10 mm shelf thickness
- > Zinc alloy
- > Order qty: Multiples of 2 pcs\*

Size	Shelf thickness	A	Depth	Width	Height
Small	5-8 mm	3.3 mm	17 mm	36 mm	16 mm
Large	8-10 mm	3.8 mm	21 mm	47 mm	18 mm

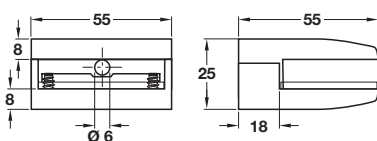


Finish	Small	Large
Stainless steel	284.01.041	284.01.043
Polished chrome-plated	284.01.241	-

## Shelf clamp support, screw fixing



- > For 8-10 mm shelf thickness
- > Zinc alloy
- > Order qty: Multiples of 2 pcs\*



Finish	Cat. No.
Stainless steel	284.01.093
Polished chrome-plated	284.01.293

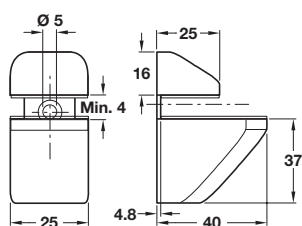


\*More than 2 pcs may be required per shelf depending on shelf weight and dimensions





#### Shelf clamp support, screw fixing

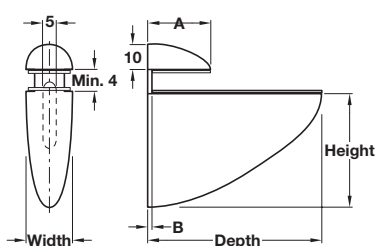


- > For 4-25 mm shelf thickness
- > Zinc alloy
- > Order qty: Multiples of 2 pcs



Finish	Cat. No.
Polished chrome-plated	284.00.221

#### Shelf clamp support, screw fixing



- > For 4-18 mm, 4-23 mm and 4-40 mm shelf thickness
- > Zinc alloy
- > Order qty: Multiples of 2 pcs

Size	Shelf thickness	A	B	Depth	Width	Height
Medium	4-18 mm	21 mm	4.5 mm	54 mm	28 mm	47 mm
Large	4-23 mm	24 mm	4.5 mm	69 mm	25 mm	48 mm
X Large	4-40 mm	40 mm	7 mm	105 mm	40 mm	75 mm



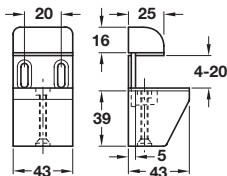
Finish	Medium	Large	Extra large
Stainless steel	284.00.002	-	284.00.004
RAL 9006 silver coloured	-	284.00.903	-
Polished chrome-plated	284.00.202	-	-



- > The load capacity of the shelf support is dependent on:
  - Shelf material
  - Shelf depth
  - Properties and condition of wall
- > More than 2 pcs may be required per shelf depending on shelf weight and dimensions



Shelf clamp support, screw fixing

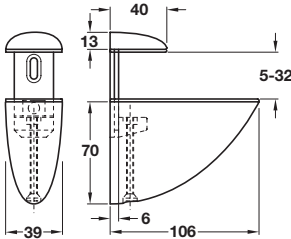


- > For 4-20 mm glass or wood thickness
- > Zinc alloy
- > Order qty: 1 pc

Fixings  
included  
✓

Finish	Cat.No.
Polished chrome	287.93.200
Brushed nickel	287.93.000

Shelf clamp support, screw fixing



- > For 5-32 mm glass or wood thickness
- > Zinc alloy
- > Order qty: 1 pc

Fixings  
included  
✓

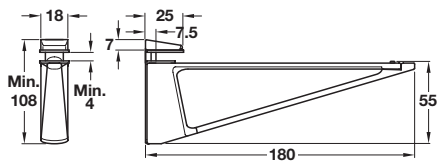
Finish	Cat. No.
Polished chrome	287.94.200
Polished brass	287.94.800
White	287.94.700
Matt nickel	287.94.600
Matt chrome	287.94.400
Brushed nickel	287.94.000

- ! > The load capacity of the shelf support is dependent on:
- Shelf material
  - Shelf depth
  - Properties and condition of wall
- > More than 2 pcs may be required per shelf depending on shelf weight and dimensions

Shelf support, screw fixing



- > For glass or wooden shelves
- > Max. 17 kg per shelf support
- > Shelf depth: min. 170 mm, max. 210 mm
- > Spacing between brackets: max. 700 mm
- > For 4-45 mm shelf thickness
- > Die-cast metal
- > Order qty: 1 pc



Finish	Cat. No.
Stainless steel effect	287.76.010



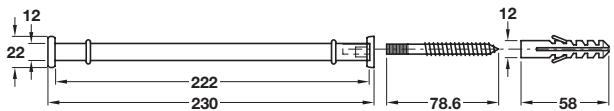
Testing was carried out according to BS EN 16337 "strength and loading capacity of shelf supports"

# WALL FIXING SUPPORTS FOR GLASS SHELVES

Supports come with rubber rings for glass shelves but these shelf supports can also be used for other types of shelves such as wood or MDF.



Shelf support set, for 220 mm deep shelves



- > For installation into masonry wall
- > For 220 mm deep shelves
- > Set consists of:
  - 2x shelf support rods
  - 2x twin-threaded screws
  - 2x wall plugs
- > Max. carrying capacity per pair of supports: 10 kg
- > Steel
- > Order qty: 1 set



Finish	Cat. No.
Matt chrome-plated	283.38.430